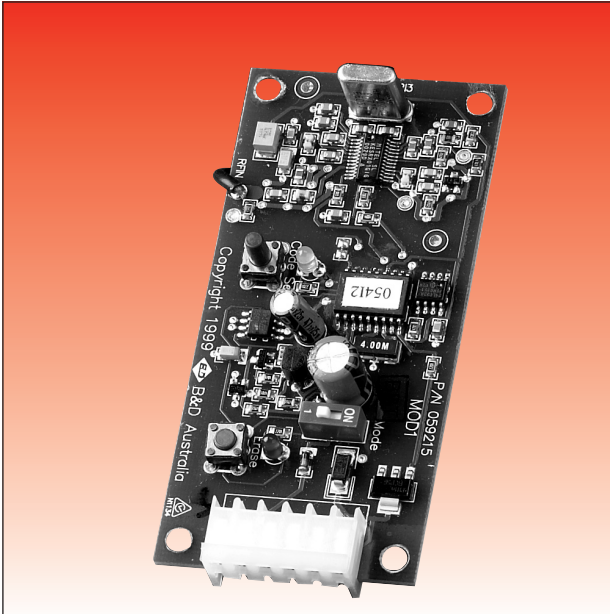




Plug - In Receiver

PRODUCT CODE
59215

Automatic Gate Openers



Description:

The receiver is intended to plug into a suitable 6-pin Molex connector. The 433 Plug-In Receiver requires a 9-25V AC or DC supply.

Specifications:

Unique Codes:	492
DIP Switch and/or Keypad Codes:	20
Input Voltage:	9-25V AC or DC
Output:	Latching (DIP Switch on) or momentary (DIP Switch off)
Suits:	B&D and Firmamatic® Gate Systems

Installation:

A. Mounting the receiver on the opener

1. Disconnect power from the opener
2. If a receiver is already attached to the 6-pin connector, remove it
3. Plug in the 433MHz Plug-In Receiver

4. Ensure the mode switch is in the required status ie. 'ON' is latching, 'OFF' is momentary. If unsure set the switch to off.
5. Restore power to the opener

B. Programming the receiver to match remote control transmitter codes

1. Press and hold the code set button for 2 seconds
2. The green code set LED should now be lit
3. Press the remote control transmitter button to be set
4. The green code set LED will extinguish and the red erase LED should flash momentarily to indicate the code is stored.

NB. To delete codes, press code set button for 15 seconds. All codes will be erased.

Diagnostic Codes:

The B&D Controll-A-Gate® Plug - in Receiver is also equipped with diagnostic LED's.

Code Set: Indicates, when flickering or on, a transmission at 433MHz is being received.

Memory Full: Indicates, when on, that the memory is full.

NB. Any additional codes will delete the first codes and so on.

